

United Way  
of the Midlands



# YOUR CONTRIBUTIONS

## IN ACTION.

Create generational change and guarantee good with a donation to United Way of the Midlands. Help us meet immediate needs, break cycles of crisis, and empower people to build their own paths to success.

One way we're creating change? Awarding grants to Community Impact Partners. Explore our grant categories below.

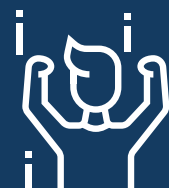
### GRANT CATEGORIES:

#### MEETING IMMEDIATE NEEDS



These grants ensure that people's basic needs (like shelter and healthcare) are met. They also guarantee that case management efforts and wraparound services are available to get people back on stable financial ground.

#### BUILDING RESILIENCE



School readiness is vital to long-term success. We fund programs for children that maintain and improve their academic performance and get them reading by third grade. We also fund skill-building programs for adults.

In addition to awarding grants, United Way targets specific outcomes through our Signature Programs like **WellPartners Dental and Eye Clinics**, **Young Men United**, and the **Midlands Reading Consortium**.

Contributions in Action will look at how your gifts are making a difference in our community through United Way signature programs, grant funding and more.

MEETING IMMEDIATE NEEDS

# GRANTS & SIGNATURE PROGRAMS

## UNITED WAY SUPPORTS MIDLANDS HOMEOWNERS



*"I appreciate everything Home Works has done for me, and I know they can do it for whoever else needs some help, too."*  
Albertha Taylor



Scan QR Code to Hear Albertha's Story

## OUR IMPACT

### BY THE NUMBERS

4,809

Patient visits provided by UWM's WellPartners Dental and Eye Clinics

2,652

Patients gained access to services at local free medical clinics

65%

of families who sought emergency shelter at UWM-supported family shelters were placed in permanent housing

760

People placed in housing through UWM-supported programs

1,183

People increased their income through new benefits, including employment

694

People received emergency shelter or motel vouchers

By supporting community partners like Home Works of America, we're making housing affordable and secure for everyone here in the Midlands.

Last year, Home Works stepped in to help area resident Albertha Taylor when her family home fell into disrepair.

"Her living room ceiling was falling apart, and the living conditions were unsafe," Home Works Executive Director Joe Huggins says.

Home Works replaced the leaky roof, and restored hope for Taylor, who wanted to protect the home built by her uncles. "I appreciate everything Home Works has done for me, and I know they can do it for whoever else needs help, too," she says.

Home Works is able to do this vital work, in part, because of philanthropist MacKenzie Scott's \$10 million donation in

December 2020—United Way of the Midlands' largest-ever unrestricted gift to date.

Scott's generosity allowed United Way to provide a \$250,000 Challenge Gift to Home Works, which was used to hire another construction manager and increase the number of home repairs from 30-40 annually to 80-90 homes each year.

"We're just so very thankful for our longtime partnership with the United Way, and certainly the MacKenzie Scott Gift is tremendous and it's making waves in Columbia for good," said Huggins.

With the Midlands' ongoing affordable housing crisis, Home Works' efforts are more important than ever. Learn more about their work at [www.homeworksofamerica.org](http://www.homeworksofamerica.org).

**BUILDING RESILIENCE**

# GRANTS & SIGNATURE PROGRAMS

## ENSURING LONG TERM SUCCESS THROUGH YOUNG MEN UNITED



A college education is vital to long-term financial health. Yet only 16% of Black men in South Carolina have a bachelor's degree.

United Way is guaranteeing resilience—and brighter futures—for young men of color. How? Through a dynamic new workforce development initiative called Young Men United (YMU), focused on academic and professional achievement.

Created in partnership with Colonial Life, YMU provides mentorship, paid internships, and professional engagement opportunities. With individualized support and guidance, YMU participants are better positioned to achieve their long-term education and career goals.

Jabari Bodrick, Director of Education & Resilience at United Way of the Midlands—and a YMU leader—says that the

guidance he received at a young age was transformative for him.

“When I was in high school, I wasn’t always the best student,” he says. “But some people took me under their wing and really poured into me—not only Jabari the student, but Jabari the person. And if you would’ve told 18-year-old Jabari that he would go on to earn a Ph.D., he wouldn’t believe it.”

Over the next six years, YMU will grow to serve 200 students, creating pathways to educational completion, career development and generational wealth building, guaranteeing good for generations of young men here in the Midlands.



“When I was in high school, I wasn’t always the best student. But some people took me under their wing and really poured into me—not only Jabari the student, but Jabari the person.”

**Jabari Bodrick**  
Director of Education & Resilience,  
United Way of the Midlands



**YMU Needs Mentors!**  
Scan to learn more.

## OUR IMPACT

### BY THE NUMBERS

**4,608**

K-12 students participated in UWM-supported youth education and development programs

**95%**

of students in United Way programs progressed (on time) to the next grade

**81%**

of students at the UWM-funded organization Vital Connections of the Midlands met or exceeded cognitive, social and emotional developmental milestones

**3,219**

Elementary school students supported through UWM programs during and after school



MEETING IMMEDIATE NEEDS

BUILDING RESILIENCE

# MORE STORY SPOTLIGHTS

# MORE STORY SPOTLIGHTS

## SENIOR RESOURCES

## MENTAL ILLNESS RECOVERY CENTER (MIRCI)

### RICHLAND COUNTY

Hot and nutritious meals, wellness checks, social activities—these are just a few of the vital offerings that Senior Resources guarantees for people like Jessie Sinkler. Nearly 100 years old and still going strong, Jessie is an active crafter (and a big fan of the meatball dinners at her senior center) who relies on United Way funded services available through Senior Resources. In just one year

alone, Senior Resources delivered close to 90,000 meals to seniors like Jessie across Richland County, getting the elderly the care they deserve. As the need for services from transportation to home care increases, organizations like Senior Resources are ensuring that Midlands seniors are well tended to.

### RICHLAND COUNTY

Annie is a 66-year-old Richland County resident who has dealt with mental illness, and experienced homelessness, throughout her adult life. Thanks to MIRCI's Assertive Community Treatment (ACT) model—which provides ongoing support to individuals in their natural environments—Annie has sustained balance in her life and significantly reduced her financial distress. Through

individual therapy, as well as group therapy, Annie has secured steady employment and now lives in a place of her own. United Way's support for organizations like MIRCI makes stories like Annie's possible. Together, we're enhancing opportunities for those who are contending with mental health challenges and unstable housing.

## ORANGEBURG-CALHOUN FREE MEDICAL CLINIC

### ORANGEBURG & CALHOUN COUNTIES

From acute and chronic disease management to lab work, discounted X-rays, zero-cost specialty provider referrals and beyond, the Orangeburg-Calhoun Free Medical Clinic is a lifeline for those without insurance. One recent patient dealing with diabetes received vital wound care in the aftermath of a toe amputation. He also received medication, as well as help navigating the medical system,

so that he could access insulin and other life-saving resources free of charge. By providing support for the Free Medical Clinic, United Way has guaranteed good for everyday South Carolinians like this patient, putting affordable healthcare within reach of those who need it most.

## HEALTHY LEARNERS

### NEWBERRY & RICHLAND COUNTIES




Elementary schooler Ja'Shawn was struggling to focus in school due to intense tooth pain. After a school nurse referred him to Healthy Learners—which provides critical healthcare services to children whose ailments are interfering with their education—providers realized he had five cavities, including three teeth that needed to be extracted. With help from Healthy Learners, Ja'Shawn

and his brothers connected with a dentist, and his father connected with Medicaid. Now, with regular preventative care, he can learn pain free, and his family can access the routine, quality healthcare they need to stay healthy and focused on their goals. Healthy Learners is just one of many ways that United Way serves children and families across the Midlands.



**United Way  
of the Midlands**

[www.uway.org](http://www.uway.org)  
803.733.5400  
1818 Blanding Street, Columbia SC 29201

 [uwmidlands](#)  
 [uwmidlands](#)  
 [@uwmidlands](#)